

FERINI

artists talking about art

ARTISTRY

Brought
to you by



Issue 20 2025



In This Issue

Editorial - Michaela Hobbs

Seed: Mountain: Moon - Caroline Way

Landscape Alliance - Colour & Light - Louie Andreas

Plaster & Paint - Michelle Partridge

As Songer Sees It - Gordon Songer

Thoughtful Young Observer - Poem: Will Goodman

Paired: Journey of Colour - Hannah Boyce & Amber Colebrook



Fine Art Courier



ELVIN

Artwork Courier in East Anglia and throughout the UK

Our personal service will deliver your artwork with care and on time

We collect from your studio direct to the gallery

You create it - and we'll freight it.

<https://aselvintransport.co.uk> 01502 677025

A S ELVIN TRANSPORT LTD LOGISTICS / COURIER / FREIGHT

graphicsolutions

studio@graphic-solutions.org.uk

www.graphic-solutions.org.uk

01502 585866

10 Snape Drive, Lowestoft NR32 4SF

Print
Flyers
Design
Adverts
Stationery



WINTER THEMED GREETING CARDS

FEATURING PAKEFIELD AND LOWESTOFT SCENES

to join our range of extensive range of greeting cards





AVAILABLE FROM FERINI ART GALLERY

Friday, Saturday and Sunday • 11.00 am - 4.00 pm

www.feriniartgallery.co.uk www.suzydobsonart.com

It's what happens with art, it grabs you and holds on tight.

Michaela Hobbs

Gallery Manager Art Lover
Oh— and enthusiastic Gardener!

Wow, Artistry 20 is an incredible achievement! We're so proud of this publication. We don't follow a strict publication schedule - we just wait and see what articles and exhibitions come up and make sure there's enough content for you all to enjoy. It seems like we're doing great!

We all have our own special places, whether it's the garden, the garage, workshop, or art studio. The gallery is still my happy place - I've loved being here from the very beginning, even though I didn't know much

about the art world. Yes, art can be a business, but it's not just about making money. It's interesting and I've learned a lot along the way. Creativity is the basis of most of the things around us.

I recently took up pottery - I know, it sounds strange! The first reason was to take my husband, who is almost blind. I thought it would be a good way to help him. His mother was a potter and he was an art teacher for many years, so I thought he might enjoy making something with his own hands. But I had a go and now I'm hooked! It's what happens

with art, it grabs you and holds on tight. Even our customers who come to browse find themselves inspired to try their hand at it eventually. Some of them have even started exhibiting their work here at Ferini. So watch out - the arty bug might be coming for you!

Follow us on Social Media.

Facebook - ferinimedia

Instagram - feriniartgallery

Or visit our website where you can see all the up coming exhibitions on the home page. We update it regularly so keep popping back.

www.feriniartgallery.co.uk

Front cover: Louie Andreas: 'I'm Still Standing' - Claremont Pier - Lowestoft — Oil on canvas

Editors

Michaela Hobbs
Paul Hobbs

Designer

Will Goodman - phantasmagroph

Published by

Ferini Media

All Saints Road Pakefield
Lowestoft Suffolk NR33 0JL
info@ferinimedia.co.uk

Printed by

Graphic Solutions

10 Snape Drive, Lowestoft NR32 4SF

© 2025 Ferini Media

www.feriniartgallery.co.uk



BROWSE THE BROWSERS



We don't just hang pictures on the gallery walls. We have many more examples of unframed original art and prints in our browsers.

Have a look – there's a lot to like.



Seed: Mountain: Moon

Caroline Way
Artist & Writer

S EED: Seed has many layers of meaning. There are many ways to sow seeds in the world. Words and images can seed ideas that can grow. Seeds plant hope into soil.

'The perspective of a seed is really alien to us. After 140 years of the Beal experiment seeds grew when planted as though time had not passed.

Think of this exhibition as a scattering of seeds into those who experience it. The observer is the soil where seeds may or may not take root.

MOUNTAIN: after the journey through steep mountain passes only one blister remains.'

This is an example freeform haiku. The element of wit is part of the Japanese history of haiku.

For the exhibition I am working on Haiga — a traditional Japanese art form that combines haiku with a painting or drawing as a visual expression of various haiku. It explores the space between word and image without being directly illustrative.

MOON: The moon is associated with lunacy and romance.

'The Sleeping Fool' depicted is overseen by the moon to be dreaming the living world. A fascinating, perplexing, subversive figure of the Middle Ages that loomed large in the turmoil of an era not so different from our own. The fool may make us laugh, with frivolous antics, but he also harbours hidden facets of an erotic, scatological, tragic or violent nature. Capable of the best and the worst, the fool entertains but also turns societal values on their head sometimes overthrowing the lunacy of established order.

Moonshadow's journey towards moonlight, Mountain Seed is an illustrated story of a spiritual quest of healing, this exhibition features images from Mountain Seed, There will be a reading of extracts from this book during the exhibition.

Each of the three walls of this exhibition will feature a different aspect of:-

SEED : MOUNTAIN : MOON



Stormy Seas - Claremont Pier - Lowestoft



Floral Candle Light

My art is about expressing colour and light, focusing on capturing mood, aesthetics and atmosphere.

I am fascinated by the different elements of the sky and how it interacts with the natural light, texture and perspective of the environment, land and sea.

The methods I use are tonalism and impressionism. At times I find there are subtle abstract elements in my work which I hope are evident, keeping a relaxed mind and focus as I work. I love to experiment as I paint and use different materials to achieve subtle textures and transparent layers of colours and glazing.

My landscapes are inspired by Suffolk, where I live. I love to paint moody and atmospheric skies that merge with the horizon to create perspective with the landscape. I use my imagination when I paint, as well as paint actual scenes. This includes Pakefield beach, Lowestoft beach, the haunting presence of Claremont pier, Covehithe and other surrounding areas.

I have completed a series of paintings of 'The Walking Men', by Laurence Edwards which are bronze statues that were on show on Lowestoft beach as part of The First Light Festival in June 2024. I visited them many times at different times of

the day, and took many photos from different angles. I see them as part of the sky, sea and land; ghostly figures set against the backdrop of colour, light and shadows.

Another fine sight is 'Yoxman', by Laurence Edwards. I have painted two different versions of the 25 foot tall giant. This has been one of my favourite projects to work with.

I have also completed a number of paintings of Covehithe, from a different perspective. These are drone scapes. I went for a long walk with my great friend Richard, who very kindly flew his drone over Covehithe, Pakefield and towards the Claremont pier. I remember

looking up to the sky and seeing the comet racing across the sky. This was in October 2024.

I see this as a form of alliance that continues to develop my passion to explore and paint nature and still life. I have recently been working on a series of floral paintings, and the way colour and light merge together to create a visual experience.

I have exhibited and sold paintings at Ferini Art Gallery and also the Forum in Norwich; a great experience sharing the open exhibition with some wonderful artists.

I would like to thank Michaela for exhibiting my work with other artists, and for her ongoing support.

Landscape Alliance – *Colour & Light*

Louie Andreas
Artist

Plaster & Paint

Michelle Partridge

Artist

Having grown up in rural Suffolk, I have always drawn inspiration from the natural world. Flowers in particular have the power to evoke memories for so many of us; and it was a desire for an everlasting reminder of the flowers in my late mother's garden that began my journey into botanical relief work. I felt a strong need to immortalise that connection we shared, that love of the natural world, and I couldn't think of a better way to do it.

Botanical relief is an incredibly tactile, quite emotive medium. Every piece I create begins with a connection to the flowers; a relationship in itself, almost. Floriography – the language of flowers – has become a part of the process too. Exploring the meaning behind flowers, and the messages they are intended to convey. For instance, white lilies – often sent as memorial flowers, but they mean so much more – innocence, rebirth. Primroses? Love, warmth, happiness. It is through our human relationship with flowers that I have had the privilege of completing many commissions, including wedding bouquets, memorial flowers, and sometimes even just that one special bloom that has its own meaning for an individual. It's an honour to play a small part in commemorating a special occasion in someone's life.

When the flowers and foliage are chosen then the physical creation begins. For that, I roll the flowers and foliage into a slab of wet clay, then carefully remove them before I add sides to the slab to form a 'one-off' mould, into which I pour the liquid stone plaster. Once completely dry, the clay is removed, leaving behind the perfect relief of each flower and leaf used. My work is about nature, and like nature, it has seasons. I love the interpretive freedom that I find in botanical relief. I really enjoy experimenting with paints and pigments, adding even more depth to the relief. I'll sometimes paint a beautifully plump bumble bee, or – and I've found myself returning to these beautiful creatures through my art over many years – the wonderfully wild hare.

One recent evolution of my work has been the running of botanical relief workshops hosted by Southwold Flower Co in Reydon. The workshop begins with a walk in Southwold Flower Co's field, where people can choose the purpose-grown flowers that they want to use in their work. The flowers are picked, then it's back inside to set the flowers in clay. We talk through the process, sharing our thoughts about what we want to express through our art; and of course everyone has their own unique piece to take home with them at the end of the day.

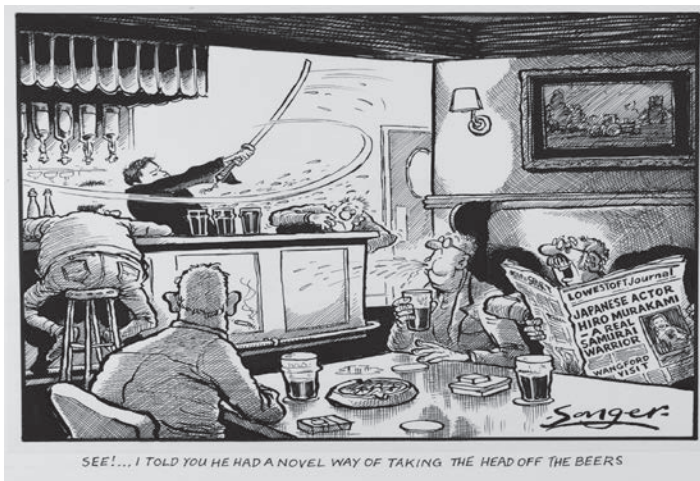
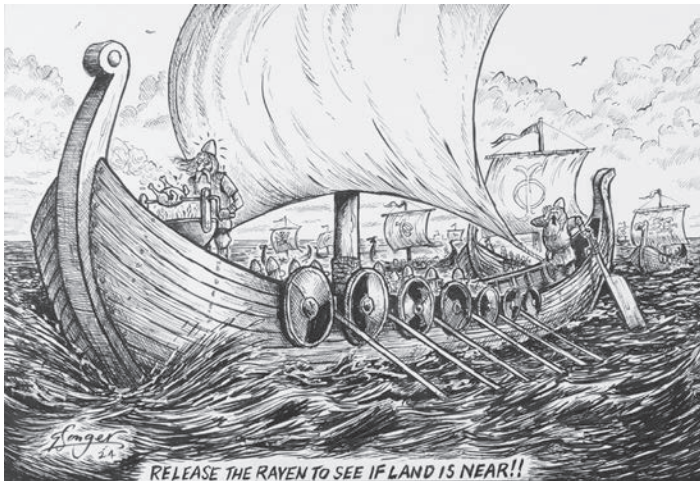
It's exciting to find another way to share my passion, by guiding others in the creation and expression of this art form. It's been an interesting and immensely fulfilling journey to date, and I look forward to continuing to share that journey with you.



'Wisteria' - £255



'Lie Amongst the Flowers' - £255



This will be my second exhibition at Ferini. I was born in Pakefield and went to school at Alderman Woodrow, studying at Lowestoft School of Art – Graphic Art. I was then employed in the sheet fabrication industry within Lowestoft and the surrounding area. From the experience of working in this environment, I was able take inspiration from the various colourful personalities and reflect them within my cartoons. The content of this exhibition is to present original Lowestoft Journal cartoons (black & white, pen and ink). In addition, a selection of mixed media artwork inspired from personal observations and imagination. As a man of few words, let the artwork speak for itself...

As Songer Sees It!

Gordon Songer
Cartoonist

Thoughtful Young Observer

Will Goodman
Artist & Designer

I was fourteen at the time, and the sun was setting, and the sea was making its usual summer evening sounds.

Upon this beach of sand
There lay a tiny pebble,
alone,
weathered,
nearly smooth.

Looking closer,
I could almost see
what remained of a
fine fingerprint maze
etched by nature.

It was revealing its history
to a thoughtful young observer.
Open to ideas,
ready to apply
his imagination.



Paired: Journey of Colour

Hannah Boyce
in collaboration with
Amber Colebrook
Artists



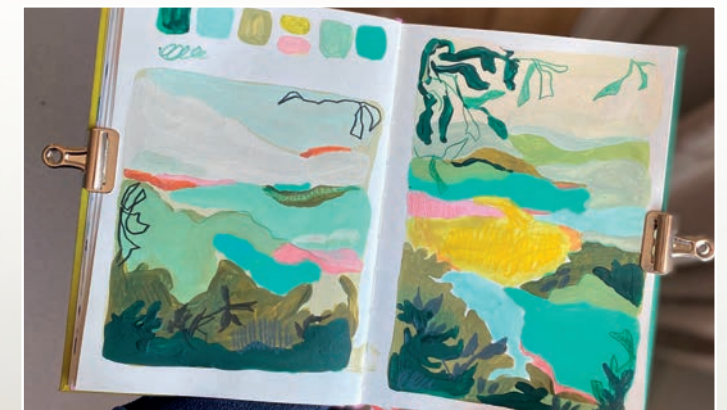
I've been creating for as long as I can remember. As a child I loved craft days - my mum would get out the pipe cleaners, pompoms and glitter glue, and I'd get stuck in creating something weird and wonderful... as well as plenty of mess! My love for making and creating has never left me. I studied Art for my GCSEs, then Art and Photography at A-Level, before going on to study Fine Art at Norwich University of the Arts. Uni was a great experience for me as I got to explore so many techniques and materials - from the 3D workshop, to the print room, graphic design and textiles. I loved every moment of it and really missed it once it was over.

After graduating, I worked as an Art, Photography and Graphics Technician at Lowestoft Sixth Form College, supporting students with their own creative journeys. I now work in PR and marketing, but I've continued to paint on the side. It's something that helps me relax and brings me a lot of joy.

In 2023, I launched my small business, Hakabo Design, where I sell prints, painted up cycled furniture, ceramics, wrapping paper and more! I pushed myself out of my comfort zone and completed 15 craft fairs that year - it was a great way to boost my confidence and a brilliant way to connect with likeminded, creative people.

Over the past couple of years, I've been renovating my little cottage in Gillingham, Beccles, where I now work from a my studio/office. This year, I've been challenging myself to make something each week - even if it's just a digital sketch. My work is inspired by interiors, pattern, texture, and the landscape around me, often with a whimsical twist and unexpected colour palette.

This exhibition, created in collaboration with my friend Amber Colebrook is all about the journey, exploration, and a shared love of colour. We hope you enjoy it!



CARDS

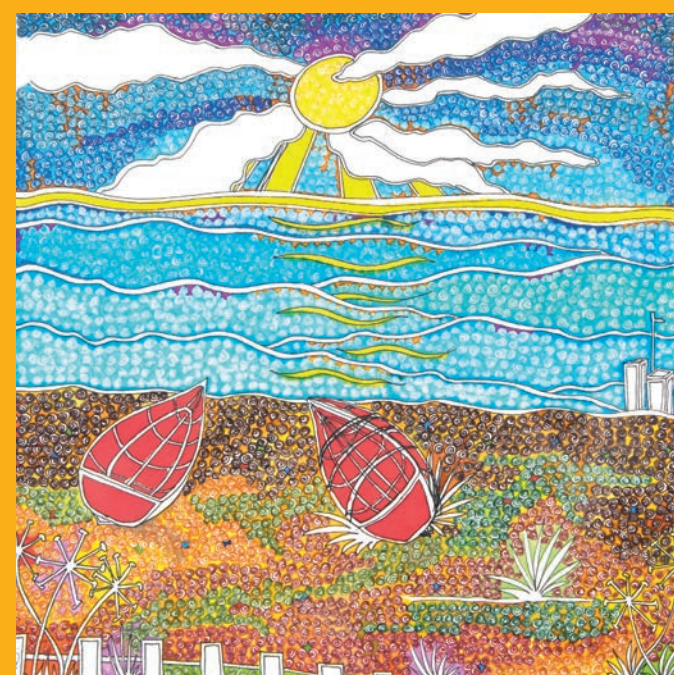
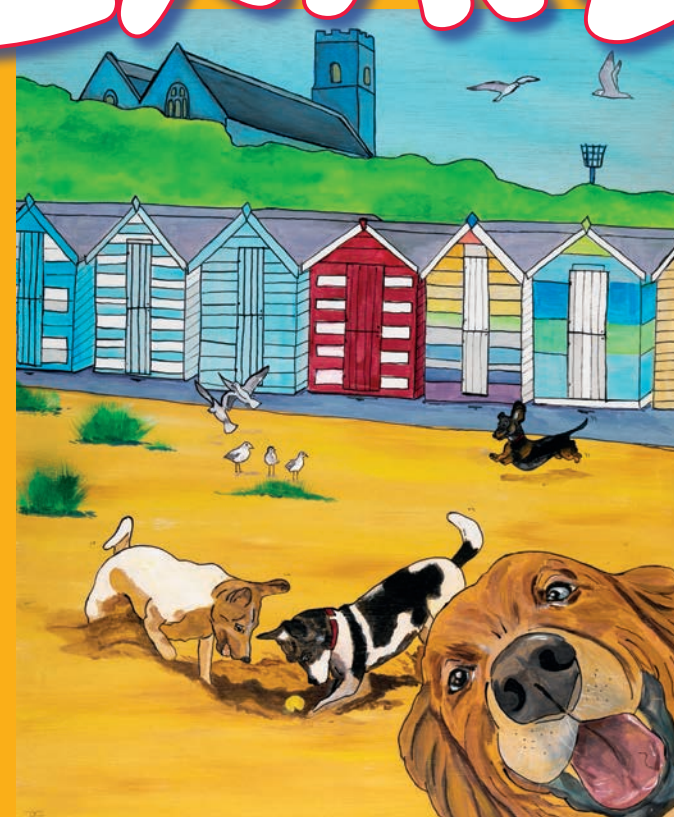
at



The Louie Andreas collection



26th Annual Summer Exhibition



**4th July —
31st August
2025**



27-29 All Saints Road • Pakefield • Suffolk • NR33 0JL
Open 11am to 4pm Fri/Sat/Sun & Bank Holidays



Landscape
Alliance –
Colour
& Light



Louie
Andreas



1st – 31st August 2025

27-29 All Saints Road • Pakefield • Suffolk • NR33 0JL
Open 11am to 4pm Fri/Sat/Sun & Bank Holidays

Gordon Songer

As
Songer
Sees
It



5th – 28th
September
2025



27-29 All Saints Road • Pakefield • Suffolk • NR33 0JL
Open 11am to 4pm Fri/Sat/Sun & Bank Holidays

CAROLINE WAY **Seed:
Mountain:
Moon**



7th - 30th
November 2025

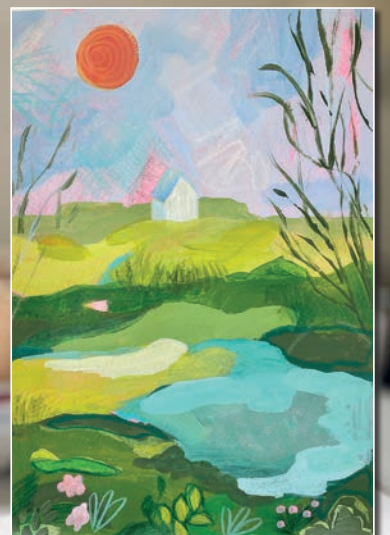


27-29 All Saints Road • Pakefield • Suffolk • NR33 0JL
Open 11am to 4pm Fri/Sat/Sun & Bank Holidays

Hannah
Boyce

in collaboration with

Amber
Colebrook



**Paired:
Journey of Colour**



5th – 21st
December 2025

27-29 All Saints Road • Pakefield • Suffolk • NR33 0JL
Open 11am to 4pm Fri/Sat/Sun & Bank Holidays